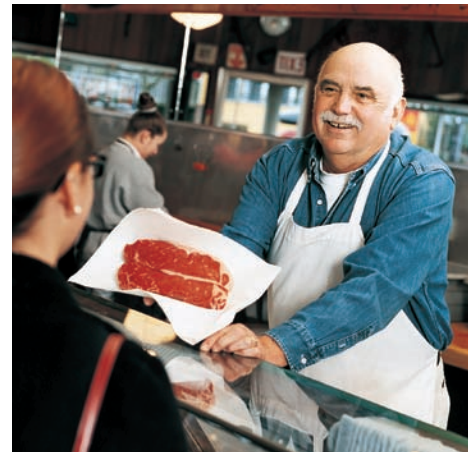




DT-EEPR



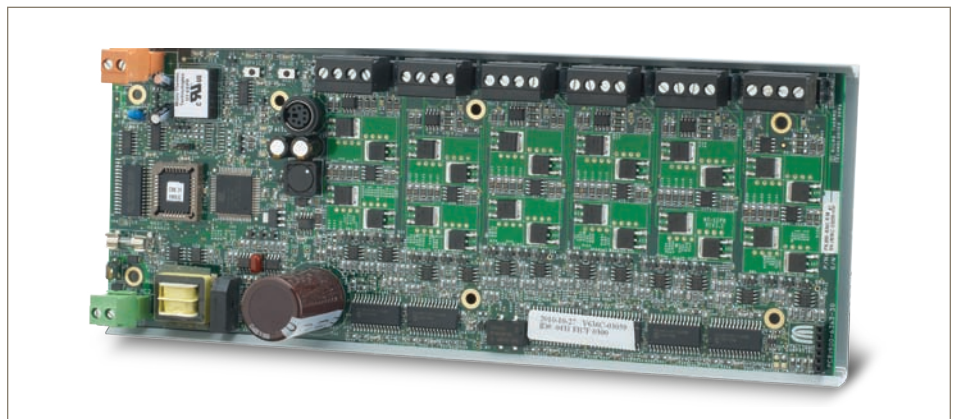
Customer Value

Micro Thermo's Dual Temp Electronic Evaporator Pressure Regulator (DT-EEPR) controller is designed to control Sporlan® CDS series and SDR series valves.

The temperature control is based on a direct reading of the air temperature in refrigerated cases. It automatically positions the DT-EEPR valve that throttles the suction on the evaporators. This throttling action increases the evaporating pressure and/or temperature with respect to the suction manifold pressure.

DT-EEPR controlled valves are considerably more precise than mechanical Evaporator Pressure Regulator (EPR) valves, allowing regulation of the average temperature to within $\pm 0.18^{\circ}\text{F}$ ($\pm 0.1^{\circ}\text{C}$) or better. In addition, the setpoint can be modified through a simple software command using the MT Alliance® software configuration tool.

DT-EEPR



The distributed temperature control system consists of various controllers from Micro Thermo Technologies, including the DT-EEPR controller itself, the MT-500 (sensor node with refrigerated units), the MT-SPC (Suction Pressure Controller) and the MT-CKT (circuit controller).

Using state of the art technology and algorithms, the DT-EEPR controller uses a predictive information model to optimize control and improve overall refrigeration performance. With the data collection abilities of Micro Thermo's MT

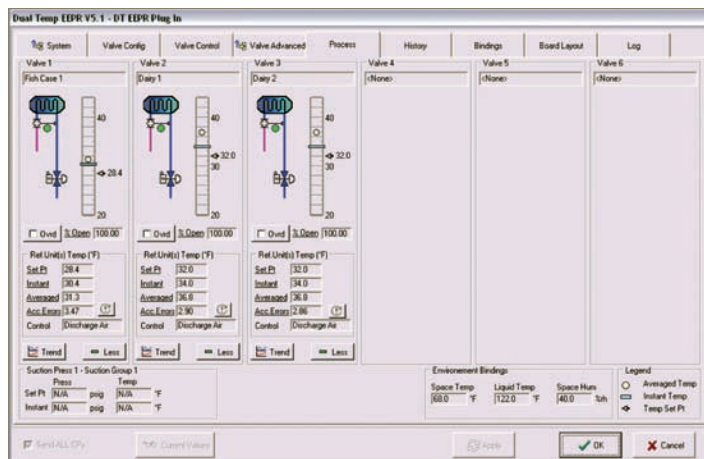
Alliance front end, our DT-EEPR can help you achieve better results than other controllers in the industry.

The DT-EEPR provides you with the ability to control dual temp case temperature without the need for mechanical adjustment. The controller automatically readapts itself based on the dual switch position and readjusts the valve opening accordingly using the new settings. In addition, the controller supports clean switch functionality.

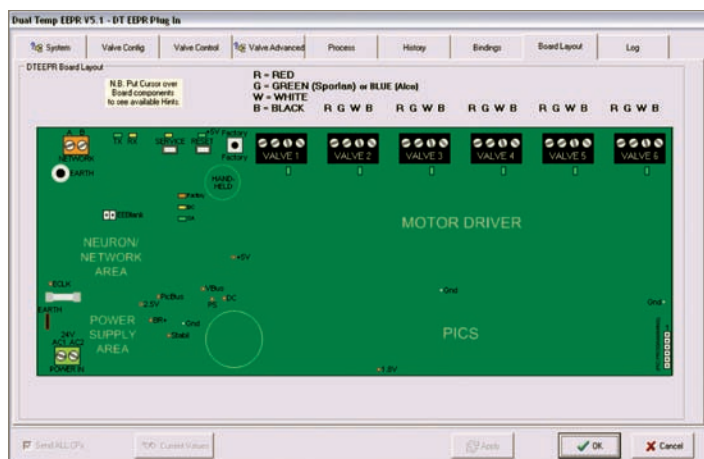


ENGINEERING YOUR SUCCESS.

Specifications	
Applications	Control up to 6 Electric Evaporator Pressure Regulator valves (Sporlan's CDS and SDR series valves)
Universal Inputs	None
Digital Inputs	None
Digital Outputs	None
Local Status/ Switching	Installs valves in stand-alone mode and opens them. Local interface shows the valves' presence and activity. MT Alliance Plug-In is used to set up the controller.
Analog Outputs	6 outputs dedicated to drive 12-volt bipolar stepping motors
Dimensions	4.00" x 10.375" x 1.75"
Mounting	SnapTrak Panel or Wall Mounting
Electrical	24 Vac Transformer (no center tap needed); 2.1A for 6 Sporlan valves
Environmental	Operating and Storage: -40 – 168°F (-40 – 75°C) 5-95% RH, non-condensing
Listings	UL Listed, CSA Approved



Easy integration and troubleshooting from MT Alliance.



MT Alliance displays board layout screen with mouse-over tooltips that make board setup and programming a snap.

Supermarket Controls Solutions...Simply Powerful



Specifications subject to change without notice
 MT Alliance™ is a trademark of Parker Hannifin Corporation
 LonWorks® is a registered trademark of Echelon Corporation
 Windows® is a registered trademark of Microsoft Corporation



Parker Hannifin Corporation
Sporlan Division
 206 Lange Drive • Washington, MO 63090 USA
 phone 636 239 1111
 fax 636 239 9130
 www.microthermo.com